



## Utilizing microsampling to improve data, recruitment and diversity in clinical trials

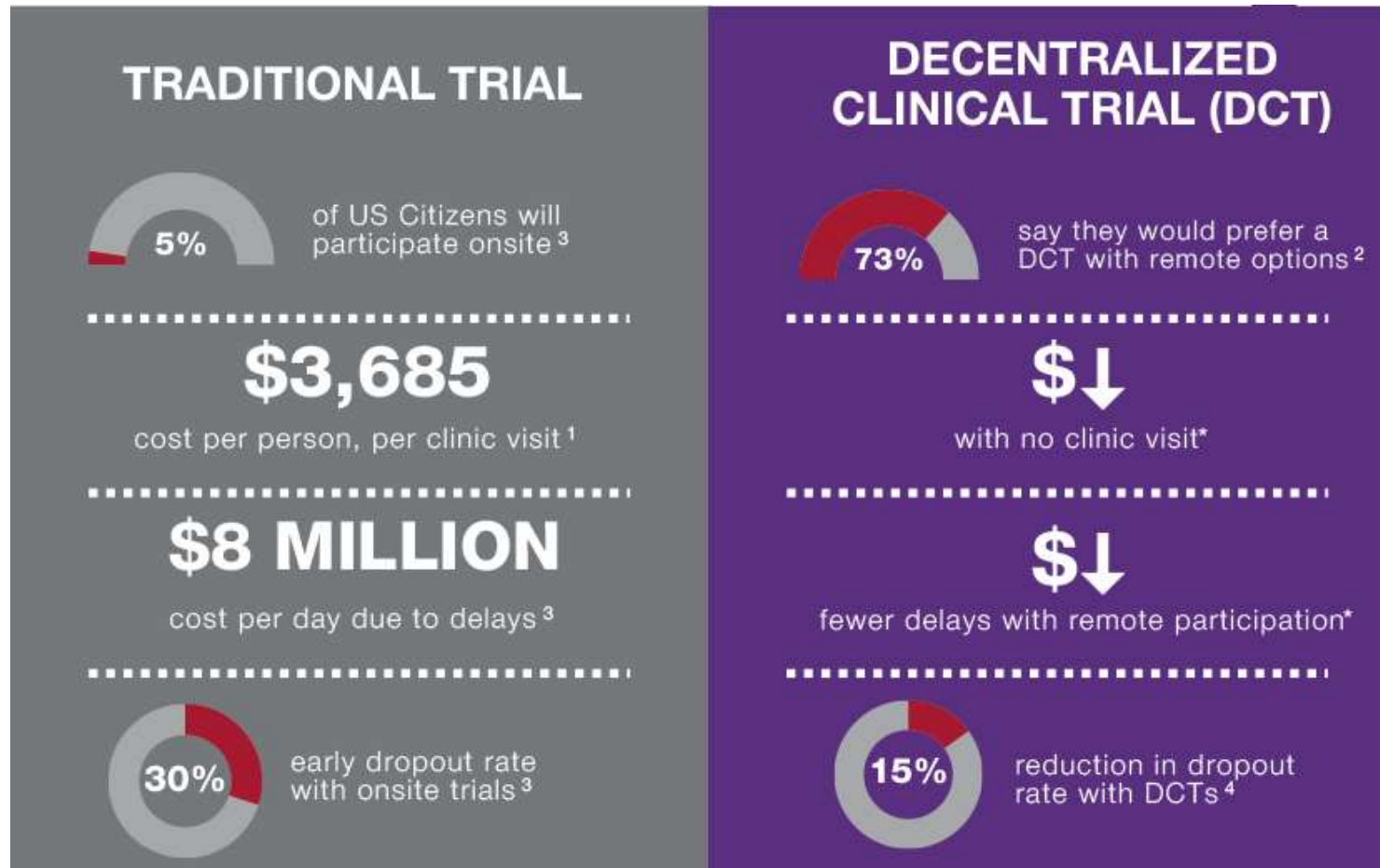
Minna Salonen, European Business Development Director  
Trajan Scientific & Medical



Mitra<sup>®</sup> devices are intended as a specimen collector and for the storage and transport of blood. They are CE-IVDR in the UK and EU. Mitra<sup>®</sup>, VAMS<sup>®</sup> & hemaPEN<sup>®</sup> are registered trademarks owned by Trajan Scientific Australia Pty Ltd.

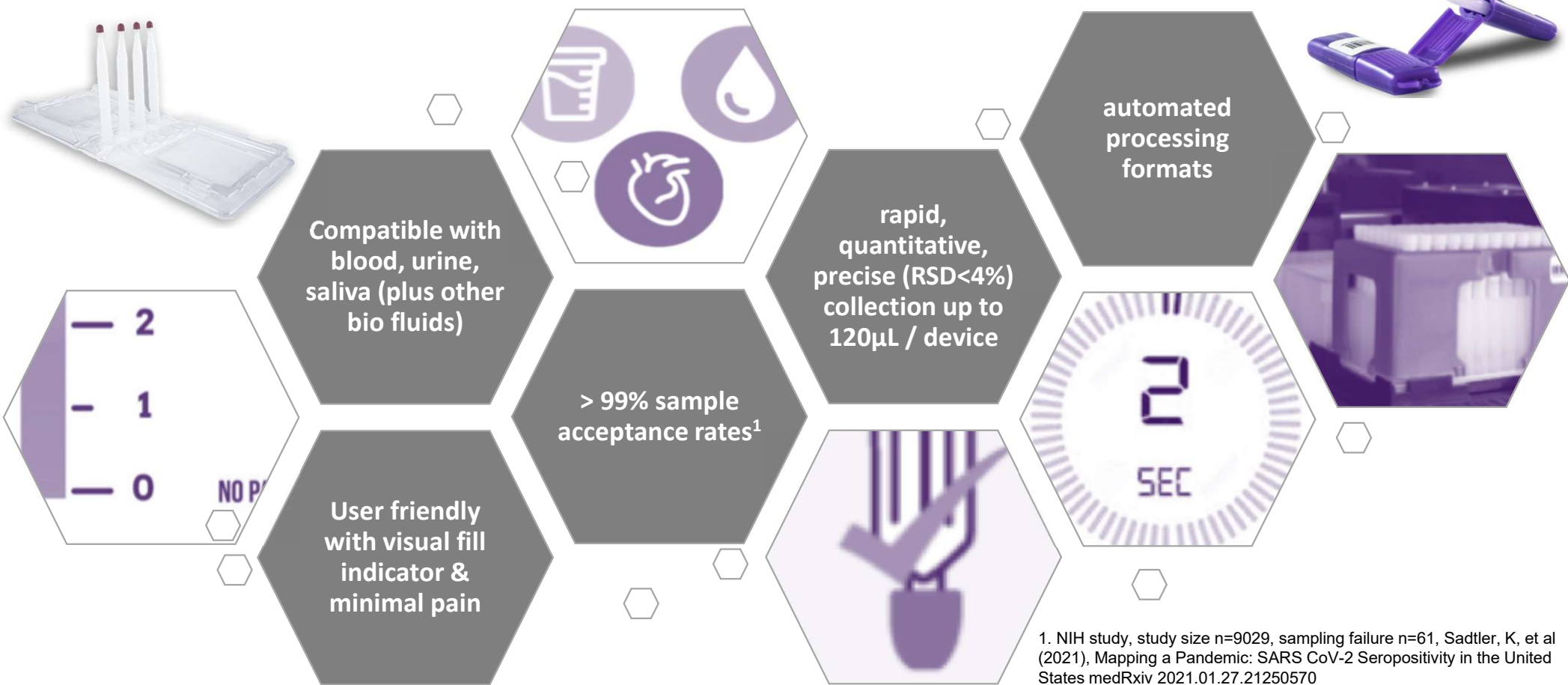


# Why consider microsampling for decentralized trials?



1. <https://www.clinicalresearch.io/blog/industry-trends/cost-of-clinical-trials-breakdown/>
2. <https://www.pharmavoices.com/news/financial-benefits-incorporating-decentralized-clinical-trial-dctapproaches/612058/>
3. <https://www.clinicalleader.com/doc/tufts-finds-substantial-net-benefits-to-using-decentralized-trials-0001>
4. [https://www.iqvia.com/-/media/iqvia/pdfs/library/white-papers/dcts-deliver-big-roi.pdf?\\_ =1663765134705](https://www.iqvia.com/-/media/iqvia/pdfs/library/white-papers/dcts-deliver-big-roi.pdf?_=1663765134705)

# A remote collection device like no other



1. NIH study, study size n=9029, sampling failure n=61, Sadtler, K, et al (2021), Mapping a Pandemic: SARS CoV-2 Seropositivity in the United States medRxiv 2021.01.27.21250570

# A remote collection device like no other



# Recruit more participants with at home sampling

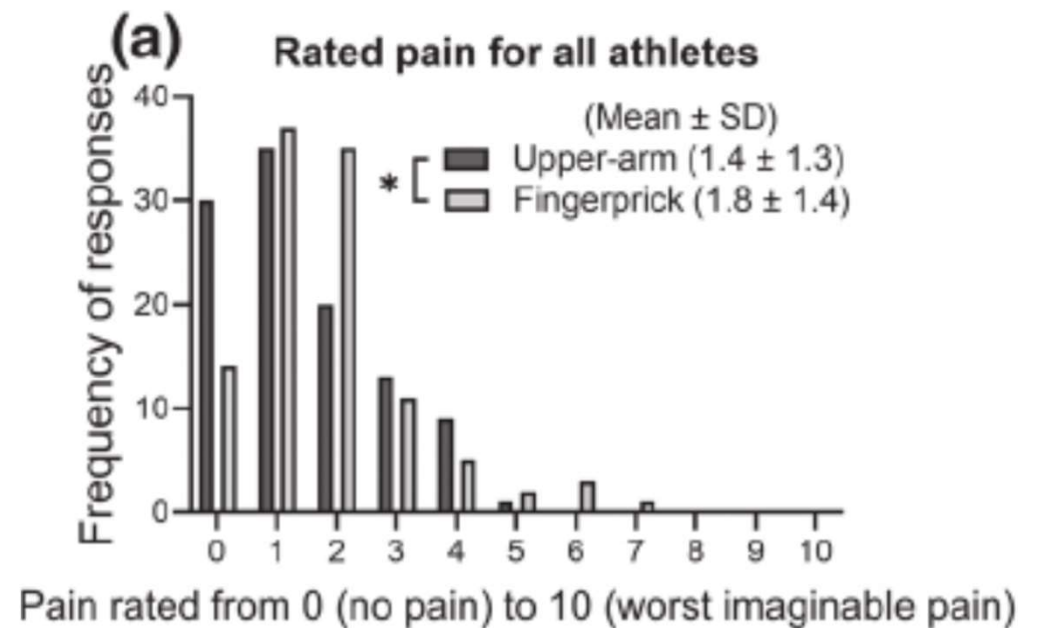
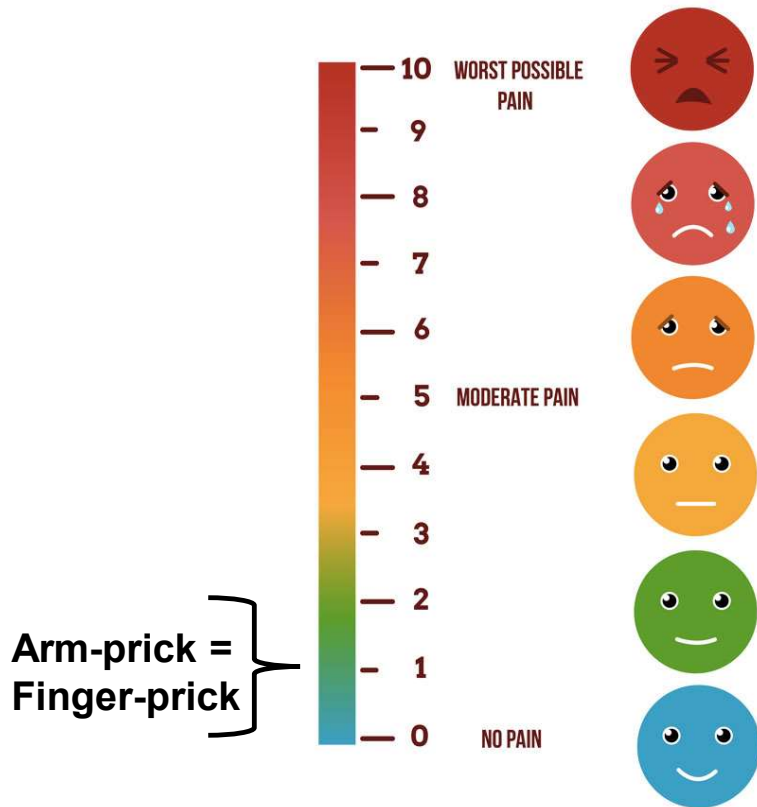


- ✓ Reduce site visits
- ✓ Eliminate cold-chain shipping costs
- ✓ Low sample rejection rate (<1%)\*

1. NIH study, study size n=9029, sampling failure n=61, Sadtler, K, et al (2021), Mapping a Pandemic: SARS CoV-2 Seropositivity in the United States medRxiv 2021.01.27.21250570



# Minimal pain levels reported with sampling



Credit: <https://doi.org/10.1002/dta.3135> Solheim, S., Ringsted, T., Nordsborg, N., Dehnes, Y., Levernaes, M., Morkeberg, J (2021). No pain, just gain: Painless, easy, and fast dried blood spot collection from fingertip and upper arm in doping control. Drug Testing and Analysis 13(10), 1783-1790

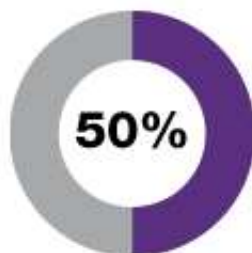
# Eliminate cold-chain shipping costs



## SAMPLE TRANSPORT

### COST CHALLENGE:

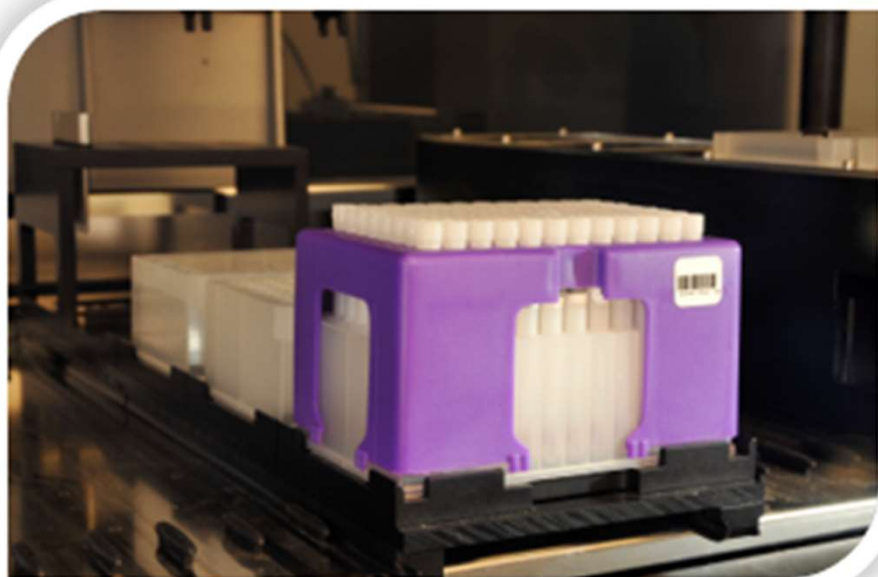
Liquid blood samples must be shipped rapidly via cold-chain transport to centralized laboratories, which increases trial costs and can also lead to sample errors if not shipped correctly.



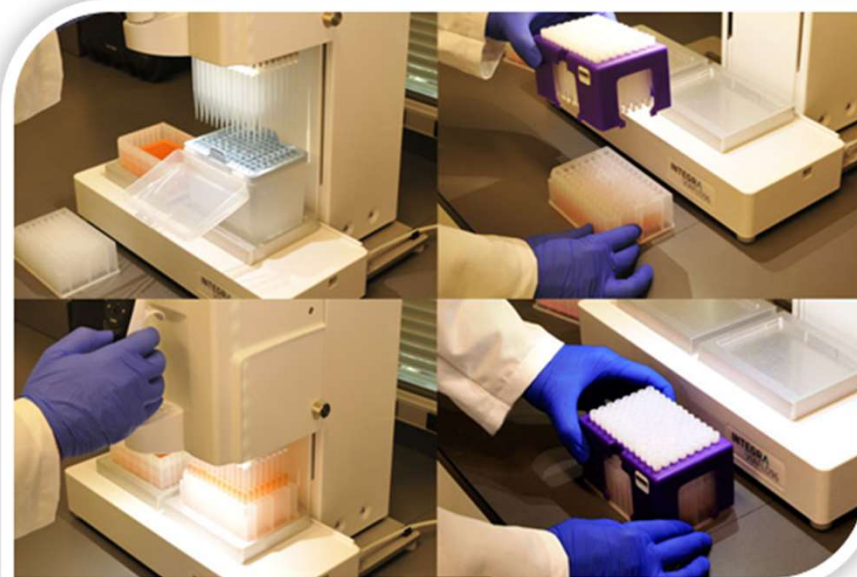
Predicted reduction in transport costs of dried blood samples that can be shipped at ambient temperatures via regular post with good sample stability.

# Options for automating sample processing

automated extractions  
on liquid handling workstation



semi-automated extractions  
on benchtop 96-channel pipettor





# Customize collection kits to your study protocol



## Components

- Options based on cohort (e.g. specialized lancets)
  - Infant
  - Pediatric
  - Adult
- Multiple devices per kit for longitudinal studies &/or to collect more volume
- Add additional lancets, bandages, etc.



## Labeling / Barcoding / Packaging

- Add study specific labels to capture variable study details
- Adhere additional barcodes for chain of custody tracking
- Include return shipping address on sample return mailer
- Branding (e.g. custom kit boxes)



## Training Materials / Inserts

- Translation available for our standard IFU into any language
- Creation of custom IFUs &/or videos to match protocol
- Utilize our training videos & materials for participants
- Add custom inserts (e.g. requisition forms)



# Microsampling Experts Since 2014

IFU Videos &  
Custom Kits



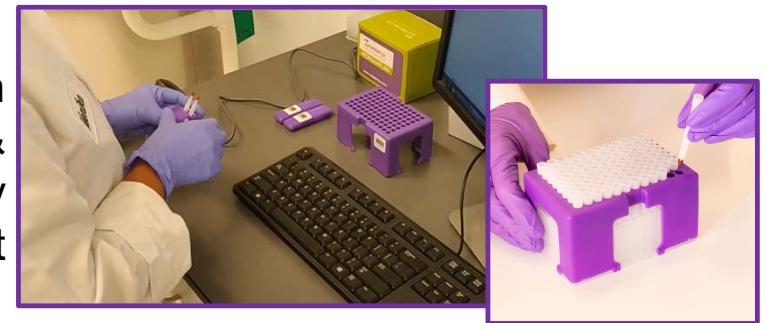
Training for Clinicians  
& Sites



Application  
Support  
300+ publications



Extraction  
Protocols &  
Bridging Study  
Support



# Thank You!

Visit us at: [www.neoteryx.com](http://www.neoteryx.com)

Contact us at: [Neo.europe@trajanscimed.com](mailto:Neo.europe@trajanscimed.com)

